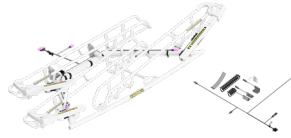




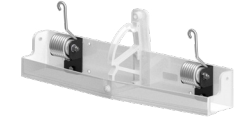
**AD PANEL**



**BIKE COUNTER**



**FAT TIRE TRAYS**



**TORSION SPRING KIT**

**ACCESSORIES**

**SPECIFICATIONS**

DESCRIPTION  
  
CONSTRUCTION  
AVAILABLE FINISHES  
COLORS  
RACK COMPATIBILITY  
OPTIONS

UNIVERSAL ADVERTISING  
PANEL FOR TRANSIT  
BIKE RACKS  
  
ANODIZED ALUMINUM  
ANTI-GLARE  
SILVER  
APEX 2, APEX 3, DL2, DL2 NP, TRILOGY  
STANDARD SIZE DECAL PLACEMENT  
TORSION SPRINGS RECOMMENDED

INTEGRATED BIKE RACK POSITION  
COUNTING FOR YOUR APC  
  
N/A  
N/A  
N/A  
APEX 2, APEX 3, DL2, DL2 NP, TRILOGY  
AVAILABLE FOR OEM OR AFTER  
MARKET INSTALLATION.

FAT TIRE COMPATIBLE  
BIKE TRAYS FOR APEX BIKE RACKS  
  
STAINLESS STEEL/MILD STEEL  
N/A  
N/A  
APEX 2, APEX 3  
AVAILABLE FOR OEM OR AFTER  
MARKET INSTALLATION.

SPRINGS OFFSET AND REDUCE  
LIFTING WEIGHT OF THE  
BIKE RACK  
  
STAINLESS STEEL  
POWDER COAT  
BLACK  
APEX 2, APEX 3, DL2, DL2 NP, TRILOGY  
AVAILABLE IN SINGLE (1) AND  
DOUBLE (2) SPRING KITS



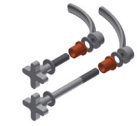
**DEPLOYMENT KIT**



**TURN SIGNAL KIT**



**KWIKSTAND**



**QUICK-RELEASE PIVOT BOLTS**

**ACCESSORIES**

**SPECIFICATIONS**

DESCRIPTION  
  
CONSTRUCTION  
AVAILABLE FINISHES  
COLORS  
RACK COMPATIBILITY  
OPTIONS

MAGNETIC SENSOR/DASH LIGHT  
INFORMS DRIVER WHEN  
RACK IS DEPLOYED  
  
N/A  
N/A  
N/A  
APEX 2, APEX 3, DL2, DL2 NP, TRILOGY  
N/A

TURN SIGNALS THAT ATTACH TO  
RACK FOR INCREASED  
SAFETY AND VISIBILITY  
  
N/A  
N/A  
N/A  
APEX 2, APEX 3, DL2, DL2 NP, TRILOGY  
N/A

PORTABLE STAND THAT SUPPORTS  
RACK FOR DEMOS AND TRAINING  
  
MILD STEEL  
POWDER COAT  
BLACK  
APEX 2, APEX 3, DL2, DL2 NP, TRILOGY  
N/A

HAND KNOB AND NYLOCK WING  
NUT ALLOW FAST TOOL-LESS REMOVAL  
OF BIKE RACK FROM PIVOT PLATE  
  
STAINLESS STEEL, ZINC AND BRASS  
N/A  
SILVER  
APEX 2, APEX 3, DL2, DL2 NP, TRILOGY  
N/A



**APEX PIVOT PLATE**



**STANDARD PIVOT PLATE**



**NARROW PROFILE PIVOT PLATE**

**HARDWARE**

**SPECIFICATIONS**

DESCRIPTION

SECURES BIKE RACK TO BRACKETS ON APEX BIKE RACKS

SECURES BIKE RACK TO BRACKETS ON STANDARD WIDTH RACKS

SECURES BIKE RACK TO BRACKETS ON DL2 NP (NARROW PROFILE) RACK

WIDTH

20"

26"

16 7/8"

WEIGHT (LBS)

19.9

19.3

16.5

RACK COMPATIBILITY

APEX 2, APEX 3

DL2, TRILOGY

DL2 NP

INSTALLATION

N/A

N/A

N/A



**TEN SECOND BRACKET**



**STANDOFF BRACKET**



**UNIVERSAL C-BRACKET**

**HARDWARE**

**SPECIFICATIONS**

DESCRIPTION

ALLOWS TOOL-FREE INSTALLATION IN 10 SECONDS OR LESS

BRACKET ATTACHES THROUGH HOLES DRILLED IN BUMPER

BRACKET ATTACHES AROUND BUMPER TO ALLEVIATE DRILLING

WIDTH

26"

N/A

N/A

WEIGHT (LBS)

38.7

12

13

RACK COMPATIBILITY

DL2, TRILOGY, APEX 2, APEX 3 AVAILABLE FOR OEM OR AFTER MARKET INSTALLATION. ROMEO RIM HELP BUMPER REQUIRED

REMOVAL OF BUMPER NOT REQUIRED

REMOVAL OF BUMPER REQUIRED

INSTALLATION