

Standard Pivot Plates



SCOPE OF THIS DOCUMENT 2

OVERVIEW 3

 Standard Installation 3

 Pivot Hardware Installation 4

MODEL DIFFERENCES 5

 Bumper Type 5

 Standard Pivot Plate vs. Narrow Profile Pivot Plate 5

 Options 5

MAINTENANCE 6

 Visual Inspection 6

 30 Day General Maintenance Inspection & Service 6

APPENDIX A – Latch Interface Inspection 7

 Travel Stop Washer Guide 8

DOCUMENT REVISION HISTORY 9

SCOPE OF THIS DOCUMENT

This document applies to all Standard Pivot Plates. The Standard Pivot Plate comes in a few different form factors including our standard 100530 family Pivot Plate and our 100517 family Narrow Profile Pivot Plate. See the images below, the Model Difference section in this document, and the *Standard Pivot Plates – Dimensions* document for more detailed dimensional differences between these two variations of Pivot Plates.



100530 Standard Pivot Plate



100517 Narrow Profile Pivot Plate

OVERVIEW

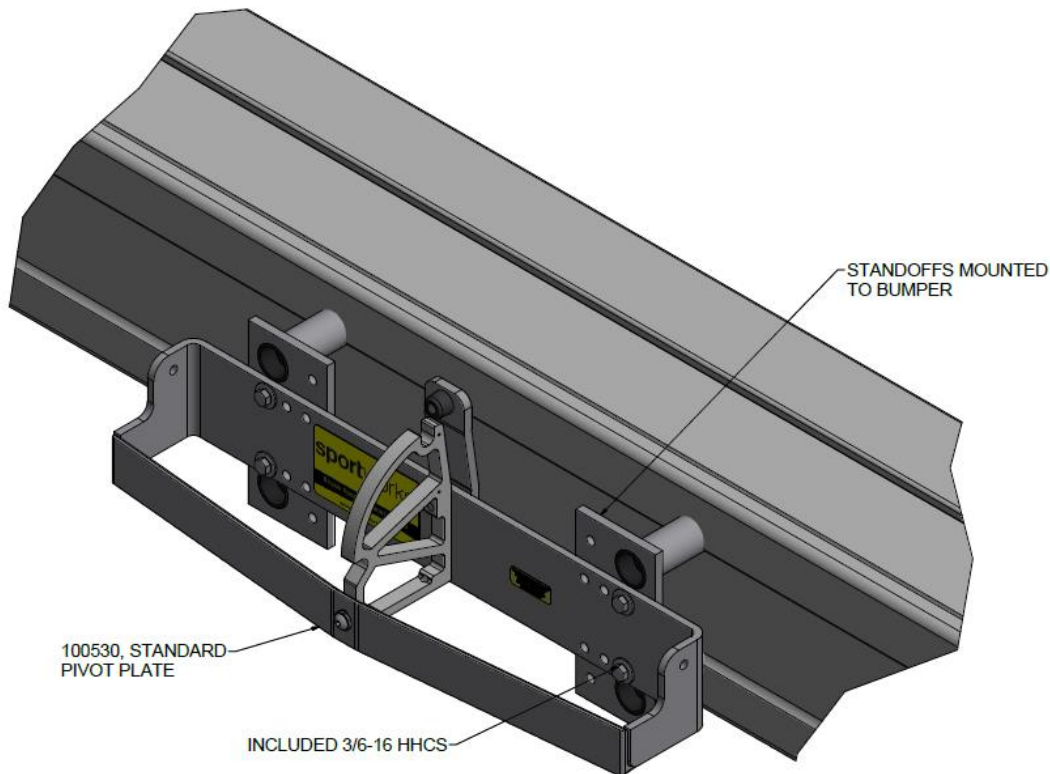
The Standard Pivot Plate is designed to fit DL2, DL3 (Trilogy), Veloporter 2, and Veloporter 3 bicycle racks on a range of bumpers. A Narrow Profile (NP) rack will require an NP Pivot Plate and similarly a bike rack that is not NP will need an accompanying Pivot Plate that is not NP.

Like all other Sportworks Pivot Plates, their primary function is mounting the Bike Rack to the front of the coach. This mounting includes the ability to stow and deploy the bike rack. To complete the installation of this pivot plate, bumper mounting brackets are needed. To select the correct accompanying bracket for your coach, you must first determine which type of bumper will be installed on your coach.

Please contact Customer Service for more details: 425-483-7000 or salesandsupport@sportworks.com

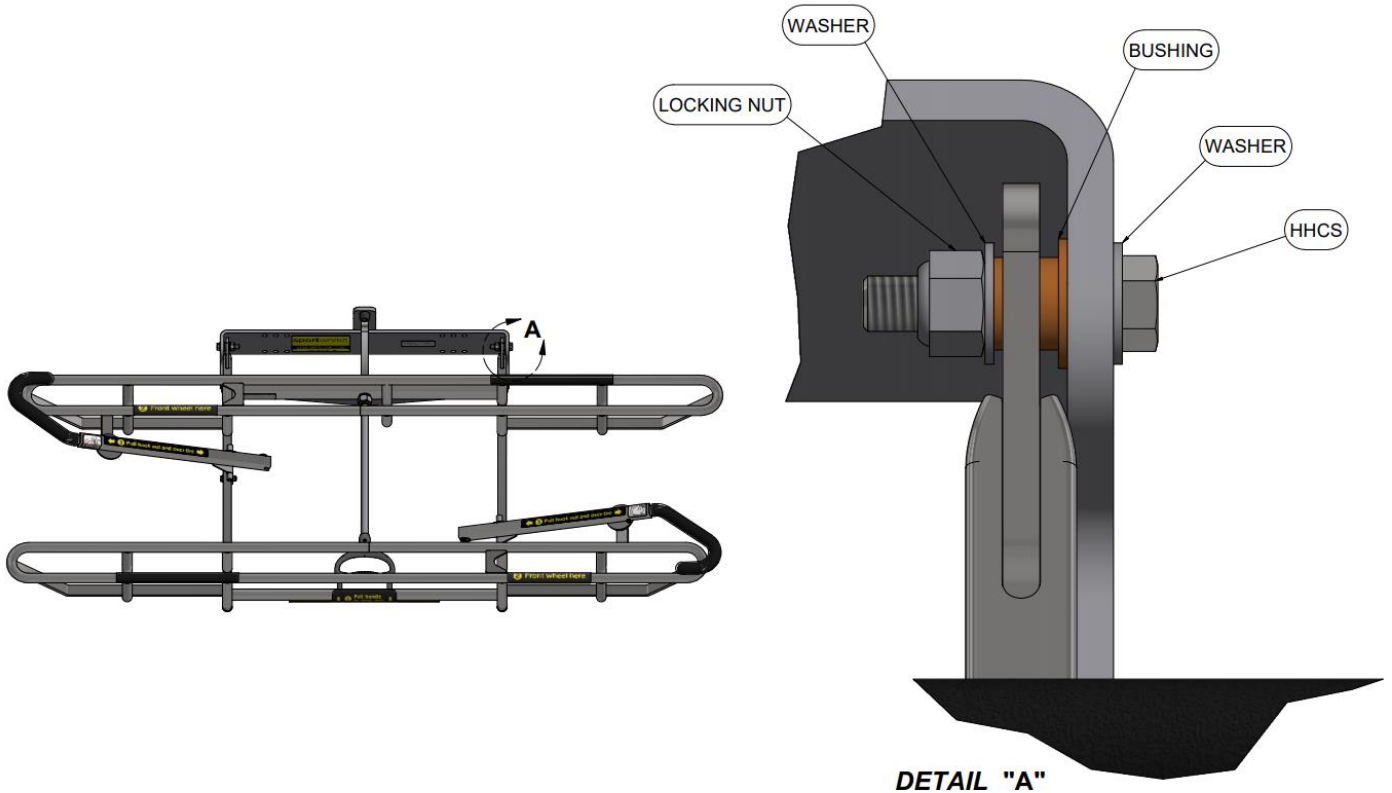
Standard Installation

1. Install bracket per standoffs/brackets per standoff instructions
2. Select desired mounting height and place Pivot Plate onto standoffs/brackets.
3. Insert four HHCS, 3/8-16 x 1.5 with accompanying washers and nuts.
4. Align Pivot Plate and tighten square, torque 30-40 ft-lbs. See figure below for example installation with Standoffs on a Romeo Rim Slide-In bumper.



Pivot Hardware Installation

For Standard Pivot Plates and bike racks (DL2, DL3 (Trilogy), Veloporter 2 & 3) the pivot hardware is included with the bike rack as opposed to with the Pivot Plate/TSB. Please see the diagram below as an example of correct pivot bolt stack installation.



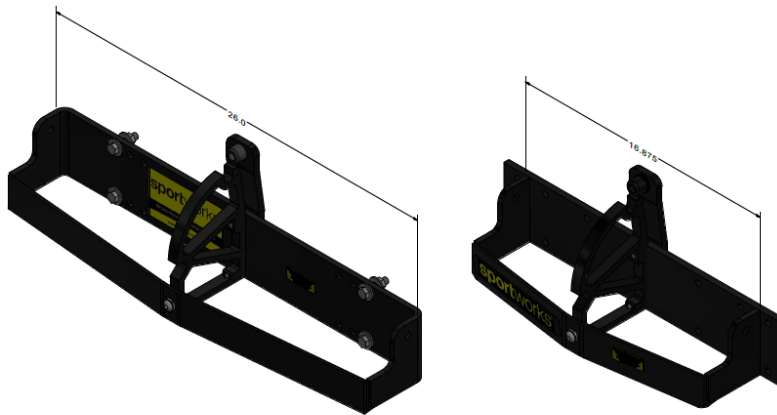
MODEL DIFFERENCES

Bumper Type

Standard Pivot Plates are designed to fit a wide variety of bumpers. Specific bumpers may require different mounting options which are accommodated in different standoff/bracket designs. Please contact Customer Service for more details: 425-483-7000 or salesandsupport@sportworks.com

Standard Pivot Plate vs. Narrow Profile Pivot Plate

There are two widths available where the pivot tabs of the bike rack attach to the pivot plate. The pivot tab attachment point on the Standard Width is 26" wide versus the Narrow Profile width which is 16 7/8" wide. Most busses accept the Standard Width bike rack and pivot plate assembly. Some busses use Narrow Profile option to avoid headlight interference. This document pertains to the Standard Width pivot plate. Please see the NP Pivot Plate Theory of operation for more details on those models.



STANDARD PIVOT PLATE

NP PIVOT PLATE

Options

The Standard Pivot Plate also includes options for the Deployment Kit. See the Parts List for more details.

MAINTENANCE

Visual Inspection

Sportworks recommends the following quick visual inspection to ensure an operable bike rack. Examine the items below before operating your coach. If the assembly does not function properly, service it before putting it into operation.

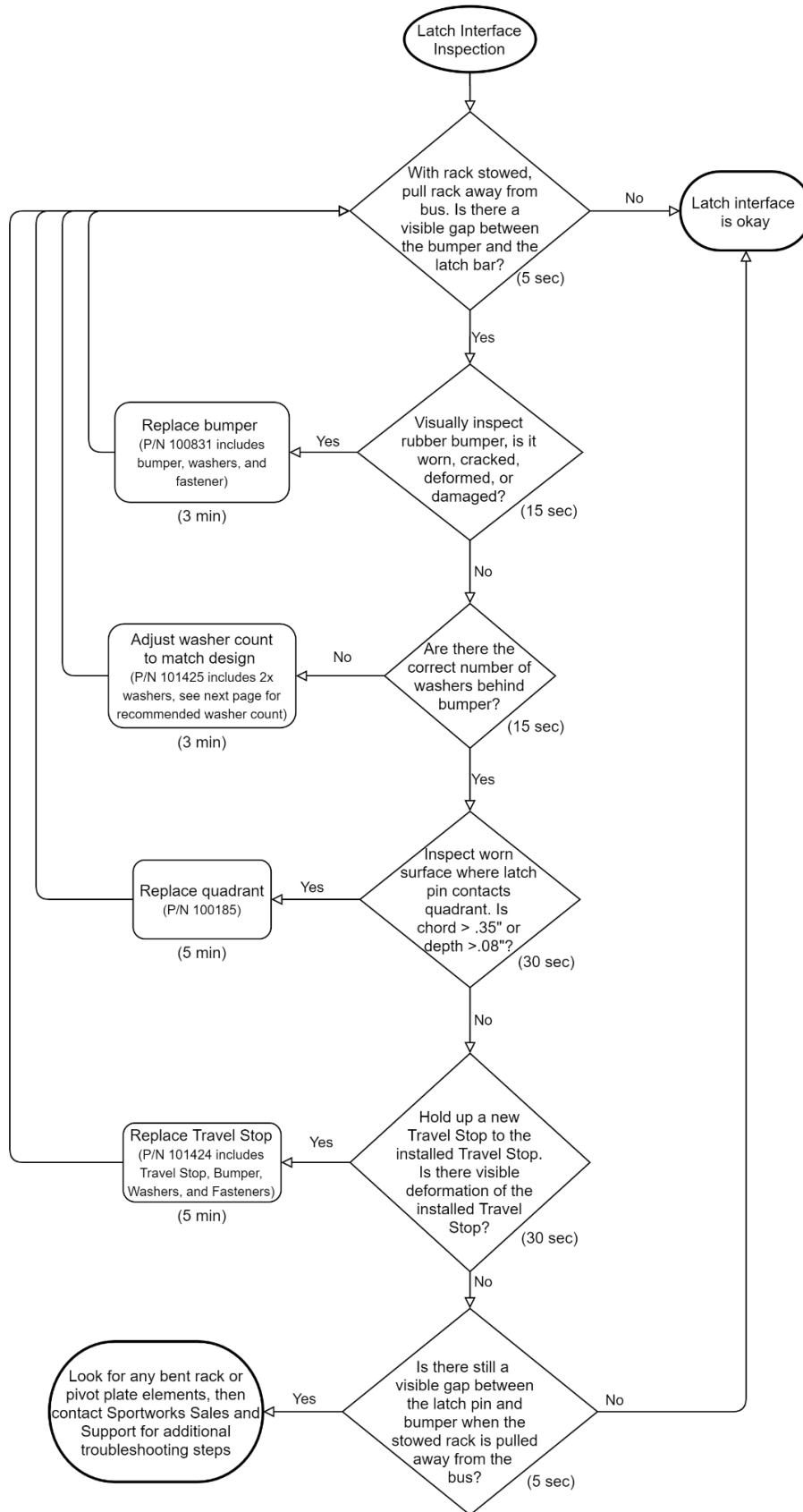
- 1) _____√ PIVOT PLATE IS MOUNTED SECURELY
Torque mounting hardware if necessary
- 2) _____√ DEPLOY AND STOW STOPS FUNCTION
Replace worn or broken parts as needed
- 3) _____√ BIKE RACK PIVOT BOLTS ARE SECURE
Replace or torque as needed

30 Day General Maintenance Inspection & Service

Check every 30 days to ensure that:

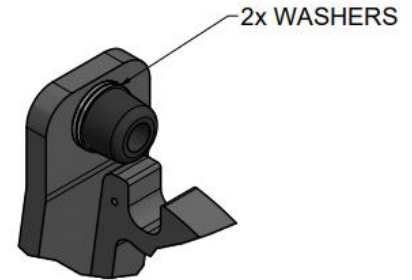
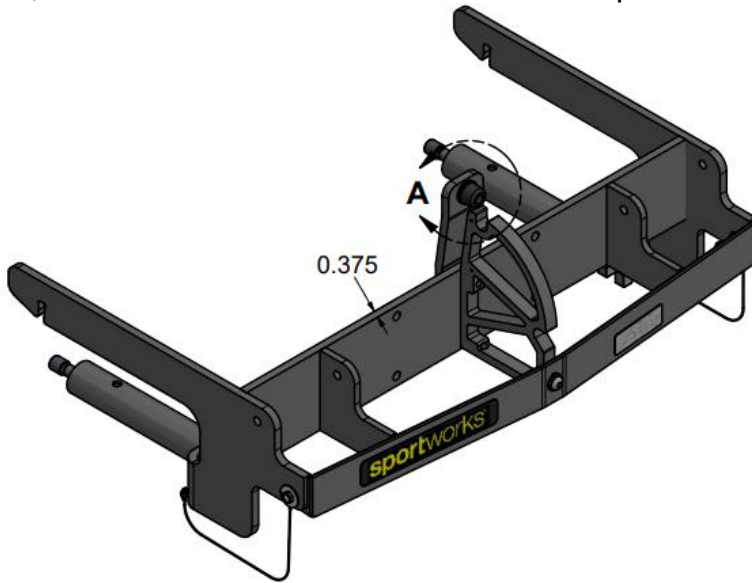
1. Both pivot bolt assemblies are tight. If using Quick Release hardware, ensure bolts are secured as tight as possible by hand. If you see excessive wear or cracks in the bronze oilite bushings you must replace them immediately. Some cutaway vehicles tend to cause the bushings to wear more quickly. You can replace the originals with our heavy-duty pivot bolt kit P/N 100839 for longer life.
2. All fasteners are tight on the bike rack and mounting bracket, including the hardware for the support arms, support strap, quadrant, pivot plate to bracket pieces, and bracket pieces to bumper or coach body.
3. The release latch automatically locks the rack in place when moved to the deployed or stowed positions. Inspect both the travel stop bumper and the quadrant for wear. See Appendix A for more detailed troubleshooting.
 - a. Travel Stop: Bumper should not be torn, cracked or deformed. The bumper should apply light pressure to the bike rack in the stowed position, but it should not compress to the point where it is significantly deformed. If there is a gap between the bumper and the bike rack, then the bumper may be damaged, travel stop bar maybe bent, or other parts of the rack may be bent. Replace as needed.
 - b. Quadrant: Inspect wear in the notches that contact the bike rack latch pin. Replace if the wear exceeds these conditions: chord length of 0.35" (9mm) or a depth of 0.08" (2mm)
4. The labels on the pivot plate are intact. Replace if shredded, partially removed, non-readable, or not adhering properly. Clean the surface thoroughly (isopropyl alcohol) before replacing.

APPENDIX A – Latch Interface Inspection

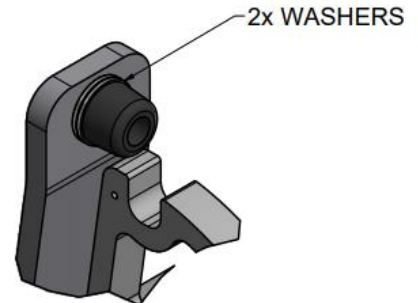
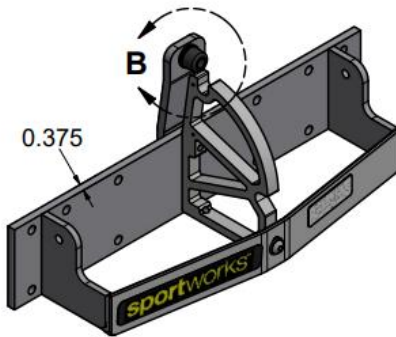


Travel Stop Washer Guide

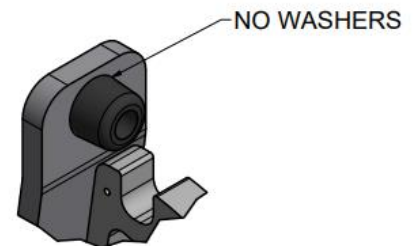
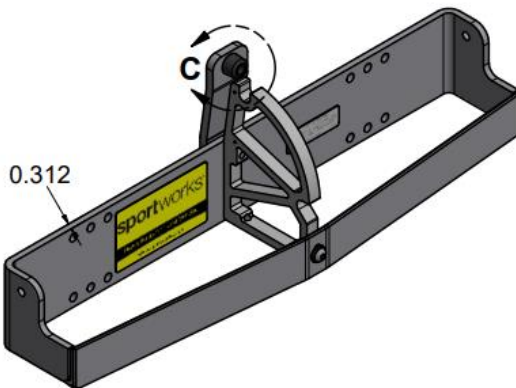
The image below is a reference for how many washers should be present behind the travel stop bumper on different pivot plate designs. In general, if the back-plate of the pivot plate or TSB is 3/8" thick, there should be 2x washers. If the back-plate is 5/16" thick, there should not be any washers.



DETAIL "A"
TUBE HIDDEN FOR CLARITY



DETAIL "B"



DETAIL "C"

DOCUMENT REVISION HISTORY

12/30/2020 – Initial release

2/2/2021 – Added differentiation of NP Pivot Plates within the Standard Pivot Plate family.