

Crossroads

Capacity: 1 **Warranty:** 1 Year

- » Sleek and minimalistic design
- » Space efficient
- » Optional integrated cable or steel chain that are both U-Lock compatible
- » Stainless steel construction

Product Specifications

Materials:

- » Stainless Steel
 - » Hook Tubes: 1.25" tubing
 - » Mounting Brackets: 0.25" plate
- » Santoprene® Rubber Bumper
- » Optional Locking Cable
- » Optional Locking Chain

Finishing Options:

- » Stainless Steel Bead Blast Satin

Mounting Options:

- » Surface Mount

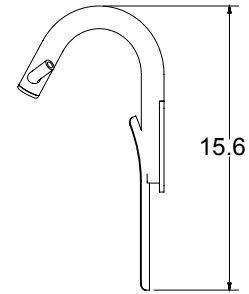
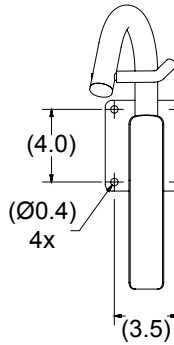
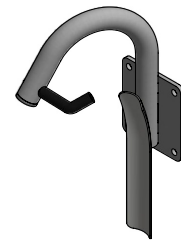
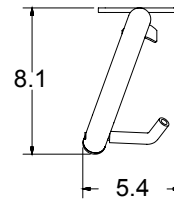
Hardware Options:

- Concrete Wedge Anchors (standard)
 - + Tamper Resistant Nuts (recommended)
- *For other hardware options contact our sales and support staff.

Options:

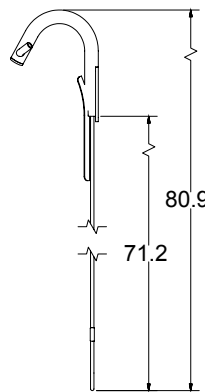
- Without Cable
- With Cable (compatible with large diameter U Locks)
- With Chain (compatible with large diameter U locks)

Standard Crossroads



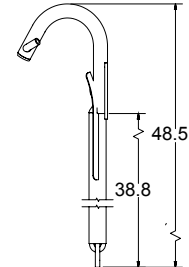
Weight: 2.5 LB

Crossroads With Cable



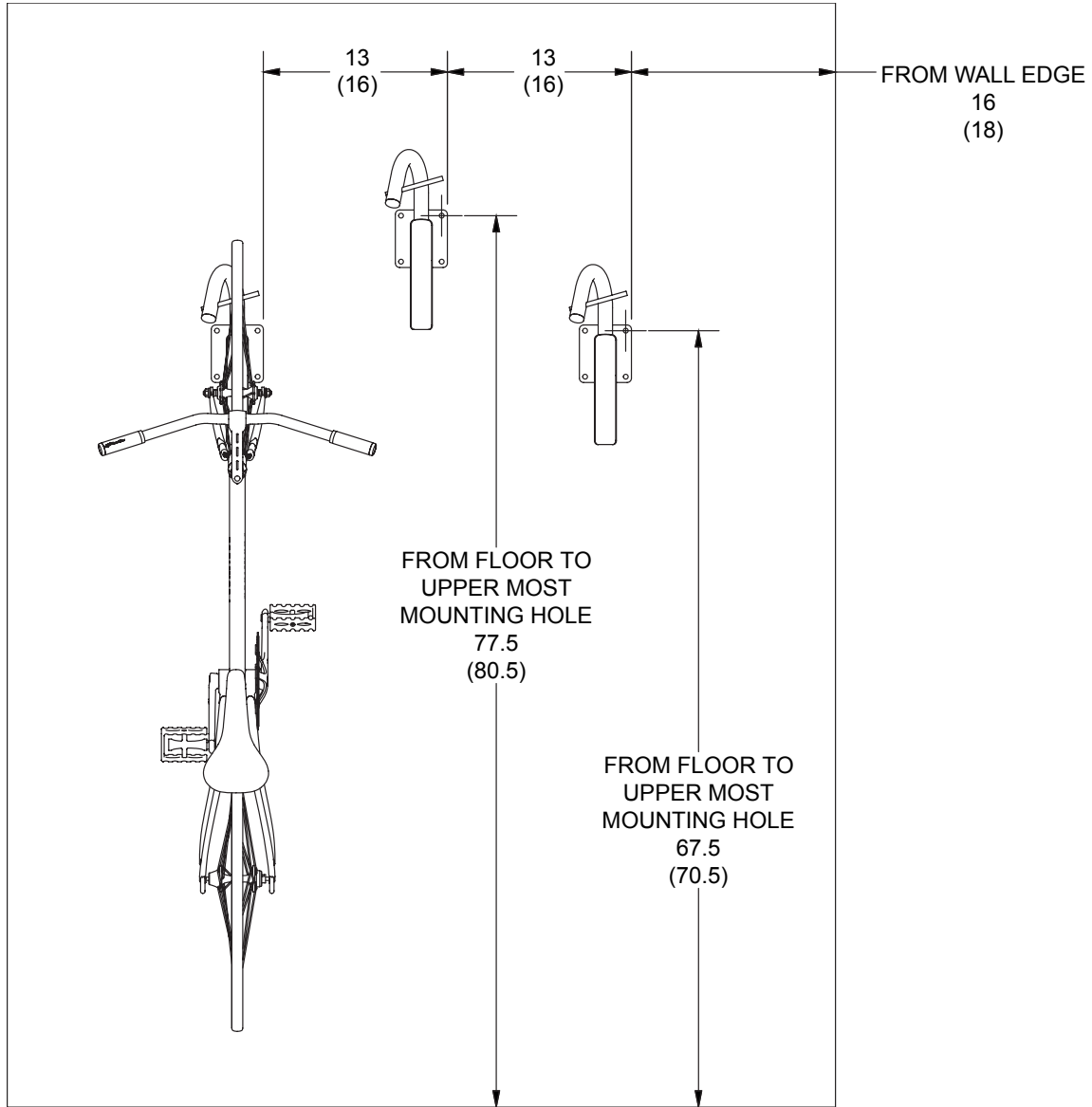
Weight: 3 LB

Crossroads With Chain



Weight: 8.5 LB

Spacing and Setbacks



*Many local governments will specify minimum spacing and setback requirements

**All dimensional drawings are in inches. Minimum dimensions are placed above the recommended dimensions. Recommended dimensions are in ().

Contractor:

Job:

Notes:

Contact Information:

888-661-0555
sales@sportworks.com
www.sportworks.com

15540 Woodinville Redmond Rd
 NE, Bldg A-200,
 Woodinville, WA 98072

