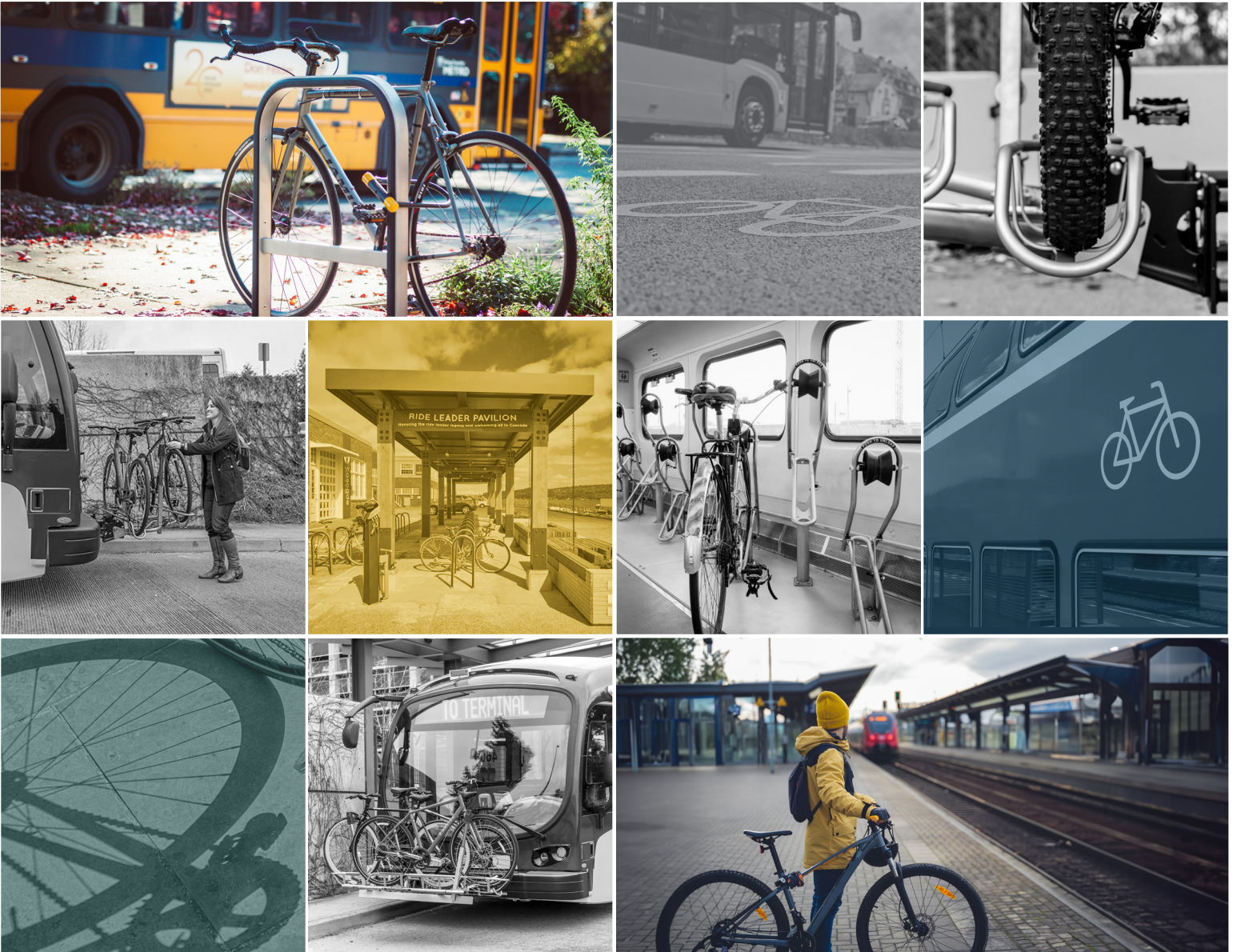


sportworks®



Transit Bicycle Racks + Bike Parking Solutions

BUS

In 1993, Sportworks developed the first bike rack for buses. Since then, we've continued to pursue innovations that support the ever-growing adoption of bicycle transport for the first and last mile.



EXTERIOR RACKS



Up to 5.5"

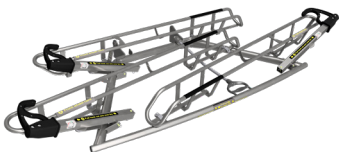
Optional fat tire trays and support arms accommodate tires up to 5.5" wide

Apex™

E-BIKE READY!

Optimized for operational performance, Apex racks set a new standard for safety and performance. Designed and manufactured for long-term reliability, Apex features a compact footprint to provide a short turning radius, clear visibility of headlights and turn signals, and superior safety and bike retention.

- Supports virtually all bicycle types
- Best-in-class ergonomics and ease of use
- Modular design reduces maintenance costs
- Rugged stainless steel construction
- Carries up to 75 lbs per position - perfect for e-bikes
- Standard trays carry tires up to 3.2" wide, with options for fat tire trays, up to 5.5"; Upgrade kits are also available



APEX 3

Available in standard or reduced length, this **3-position** rack supports bikes up to 75 lbs.



APEX 2

An innovative, sleek, compact, and fully modular **2-position** transit rack.



APEX 1

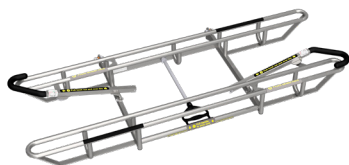
Supplies easy and compact transport for a **single bicycle**.



DL2™ & Trilogy (DL3™)

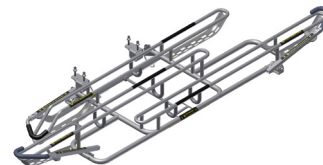
The most widely used transit bike rack on the planet, the DL series is synonymous with quality, durability, and ease of use. Riders love them for their simplicity in loading and unloading. Transit operators value them for their ability to withstand the tough transit environment.

- Unique support arm secures the front tire without straps or cords and prevents damage to bicycles
- Available in stainless steel with an anti-glare bead blast finish, or powder-coated mild steel



DL2

2-position rack featuring unparalleled ease of use and durability.



TRILOGY (DL3)

With unprecedented durability, this **3-position** rack is designed for maximum bike capacity.



Veloporter™

The Veloporter features a modular design and rugged construction, plus our intuitive and rider-friendly support arm.

- **2-position** transit rack
- Energy-absorbing, crash-resistant composite wheel trays
- Corrosion-resistant stainless steel frame, and support arms
- Easy to install, intuitive to use

Exterior Racks

	PREMIUM Apex	FLAGSHIP DL/Trilogy	SPECIALTY Veloporter
Primary Features	Modular, accommodates a wide range of bikes, including E-bikes	Reliable, simple design, easy to repair	Industrial design, intuitive & easy to use, crash-resistant trays
Modular Tray	●	-	●
Number of Bikes Supported	1, 2, 3	2, 3	2
Max Bike Weight	75 lbs	55 lbs	55 lbs
Max Tire Width	3.2" (Std), 5.5" (Fat Tire Option)	2.3"	3"
Wheel Base Size	Up to 48" (Std), 51" (Fat Tire Option)	Up to 44"	Up to 46"
Wheel Size	16"-29" (Std), 24"-29" (Fat Tire Option)	20"-29"	16"-29"
Stainless Steel	●	●	●
Mild Steel	-	●	-



SpinLock™

Designed to support quick stops, enabling efficient transit operations. The SpinLock is the easiest, fastest, and most secure interior bike rack solution.

- Accommodates most standard bicycle sizes: wheel sizes 26" to 29", tire widths up to 2.75"
- Quick, easy install, with optional risers and ramps to improve density while maintaining a compact footprint
- Constrains lateral movement of bike for secure hold regardless of orientation
- Roll-on, roll-off design makes loading and unloading quick and easy for all riders - even with heavy bikes

E-BIKE READY!



ADDITIONAL HEIGHTS



InterLock™

Highly adaptable and compact; designed to maintain maximum aisle space. The ideal solution when additional bicycle carrying capacity is required within a compact space.

- Accommodates most standard bicycle sizes: wheel sizes 16" to 29", tire widths up to 2.5"
- Modular design provides many mounting options to fit the space and achieve high density bike parking
- Weight-activated front wheel retention system provides superior lateral and vertical retention
- Integrated ratchet strap secures back wheel for increased stability



SwingLock™

Ultra-secure bicycle wheel retention system with a minimal footprint and options to fit virtually any vehicle.

- Accommodates most standard bicycle sizes: wheel sizes 16" to 29", tire widths up to 3" with angled hook; 3.25" using the vertical hook, wheel bases up to 48"
- Lower assembly stabilizes the rear wheel and stows flush to vehicle wall when not in use
- Configurable design fits in a variety of spaces, including curved walls



VERTICAL HOOK



ANGLED HOOK

Bike Counter



Track Usage & Trends

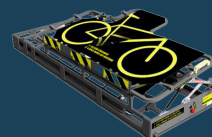
Add a bike counter harness to any exterior rack to count the number of bicycle positions in use.

Compatible with a variety of on-board systems, real-time and historical usage can be presented to increase operational efficiency. Correlating usage with specific routes can facilitate planning and determine bike capacity needs.



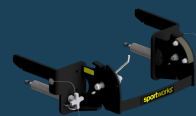
Scan for more information on our available accessories

Specialty Racks & Accessories



Luggage Bay

Ideal for a variety of coaches and compatible with most standard and fat tire bikes, including E-bikes.



Ten Second Bracket™

Integrated pivot plate and bumper bracket assembly that makes seasonal attachment and removal easy.



Ad Panel

Used to promote bike transport or other advertising when the rack isn't in use.

Sportworks transit racks are engineered to meet the unique requirements of light, heavy, commuter rail, and streetcars. We lead the industry in ease-of-use and safety while accommodating the widest range of bicycle types.

Rail



SpinLock™

⚡ E-BIKE READY!

Robust stability paired with an intuitive roll-on, roll-off design. Ramp and riser options maximize density and aisle space while facilitating independent loading and unloading of bicycles.

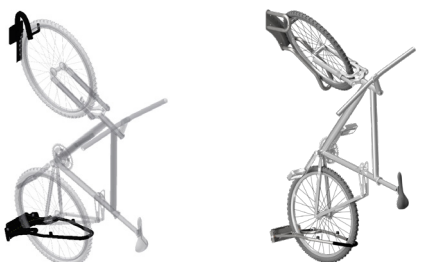
- Accommodates most standard bicycle sizes: wheel sizes 26" to 29", tire widths up to 2.75"
- Quick, easy install, with optional risers and ramps to improve density while maintaining a compact footprint
- Constrains lateral movement of bike for secure hold
- Unique, integrated ratcheting roller for easy loading & unloading, even of heavy bikes



InterLock™

Weight-activated front wheel retention system minimizes lateral and vertical movement. Easily adaptable with minimal aisle interference. Ideal for maximizing capacity for both bicycles and passengers.

- Accommodates most standard bicycle sizes: wheel sizes 16" to 29", tire widths up to 2.5"
- Small footprint keeps aisles and passenger areas clear
- Integrated ratchet strap increases stability



VERTICAL HOOK

ANGLED HOOK

SwingLock™

A safe and highly secure bicycle wheel retention system designed for buses, light and heavy rail. Designed to specifically meet FRA regulations (49 CFR 238.233c).

- Accommodates most standard bicycle sizes: wheel sizes 16" to 29", tire widths up to 3" with angled hook; 3.25" using the vertical hook, wheel bases up to 48"
- Configurable design fits in a variety of spaces
- Lower assembly stabilizes the rear wheel and stows flush to vehicle wall when not in use
- Choose from a standard or angled hook (angled hooks are ideal for railcars with limited height clearance)



At Sportworks, we pour our hearts into every single product – because we use them ourselves every day.

As a team of avid cyclists and public transportation users, we meticulously design, engineer, and manufacture each system in-house, taking personal pride in their functionality. Our commitment to quality and excellence is something that sets us apart from the rest, and we're driven by a passion to enable active transportation.

With over 30 years of experience, we provide an end-to-end solution to support sustainable mobility, and economically fulfill the first and last mile. Our goal is to craft the best bicycle transport solutions to support riders and enable operators through every mile of their journey.



In addition to bike transport solutions for transit vehicles, we manufacture a complete portfolio of bike parking solutions for the beginning and end of each commute. Scan to download the catalog.



MADE IN ...
Washington



LIVING FUTURE
CORPORATE MEMBER



American
Public Transportation
Association

Represented by:

TransMark
Transit Marketing Group